

# MIDDLE TENNESSEE VOCAL ASSOCIATION

## ALL MID-STATE CHOIRS

### EVENT INFORMATION

#### Location/Dates

First Baptist Church of Nashville  
108 S. Avenue South  
Nashville, TN 37203  
November 17-18, 2014

#### Fees

The Mid-State fee is **\$12.00** per student. **Note – this is more than last year as was approved at the Jan/Feb MTVA meetings.**

This fee covers the cost of the music, clinicians, accompanists, etc.

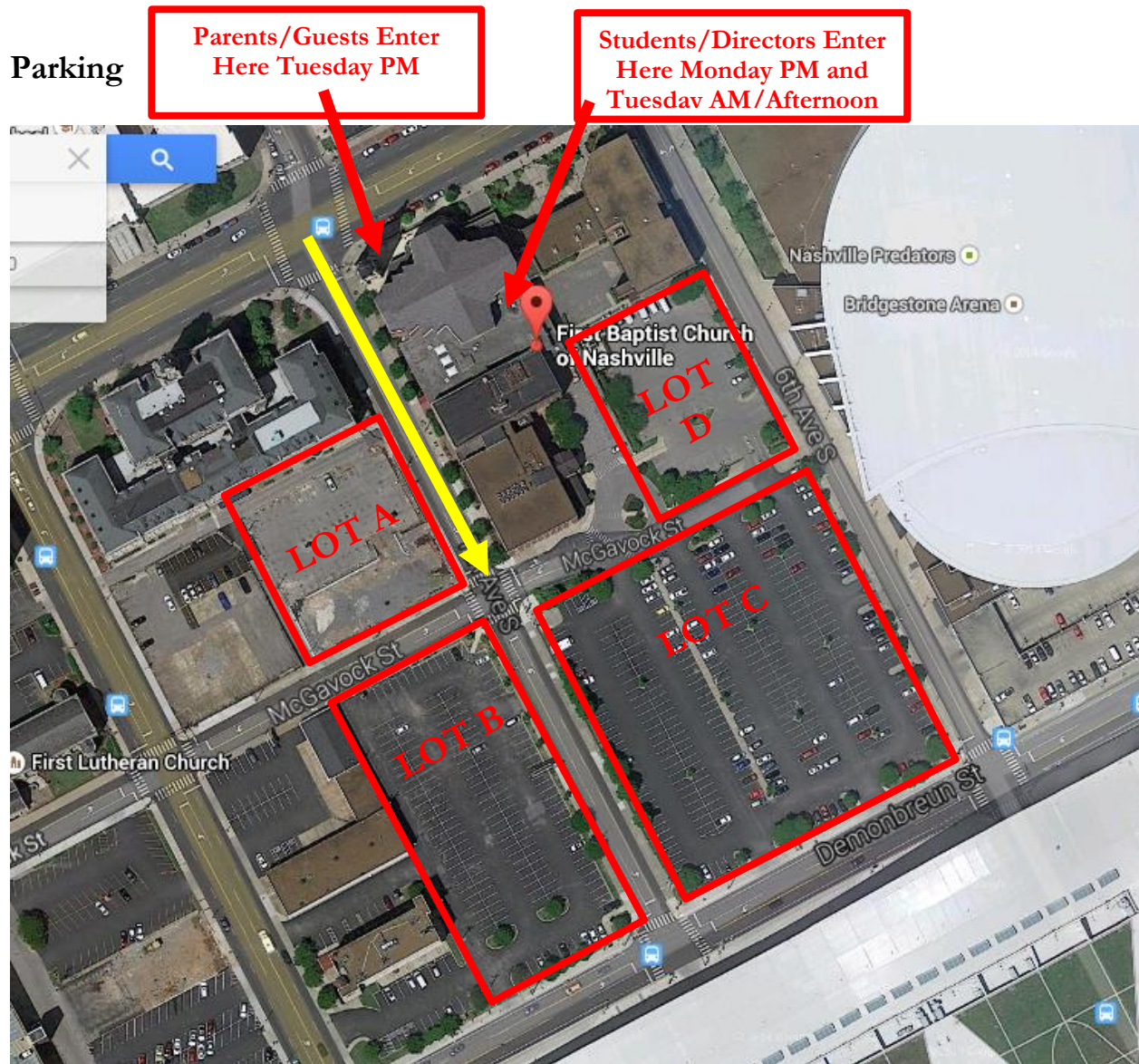
Please prepare one check **per school** for each 10-12 student (**not Freshmen – the Freshmen Honor Choir fees will be due at a later date**) who made Mid-State. Make the check payable to MTVA and **BRING THE CHECK WITH YOU TO THE EVENT. YOUR STUDENTS WILL NOT BE ABLE TO REGISTER FOR/PARTICIPATE IN THE EVENT UNLESS PAYMENT IS PRESENTED.** In order to avoid confusion at Registration, please do not send payment ahead of time to the treasurer.

No separate form/registration is required – students who earned a spot in Mid-State should attend.

#### Hotels/Travel Suggestions

MTVA is not reserving a block of hotel rooms at one of the downtown establishments (in fact, we are housing our clinicians in hotels 15-minutes away from downtown to save on money). Directors are responsible for securing your own hotel arrangements.

- Check into your hotel before the Monday evening rehearsals.
- Eat dinner before the Monday evening rehearsals.
- Downtown hotels can be upwards of \$175/night; consider choosing a hotel in south Nashville/Brentwood and driving into downtown Tuesday morning.
- AVOID/PLAN FOR DOWNTOWN TRAFFIC. This includes coming into downtown Monday evening and more so as you come into town Tuesday morning. If possible, avoid I-24 W coming in from the southeast or I-65 S coming in from the north. **RULES REGARDING ALL-STATE ELIGIBILITY CANNOT BE WAIVED DUE TO TRAFFIC CONCERNS – it is better to arrive safe and early rather than late!**
- **WE NEED VOLUNTEERS TO MAN THE SECURITY DOOR DURING LUNCH AND DINNER BREAKS ON TUESDAY.** If you plan on staying at FBC during these times, please email Brian Russell at [russellb@rcschools.net](mailto:russellb@rcschools.net) and volunteer. It's an easy job – just need to be present.



**ALL VEHICLES SHOULD TURN ON W. 7<sup>TH</sup> AVE TO ACCESS THE FBC LOTS.**

**Directors/Students:**

- Smaller vehicles can park in Lot D Monday evening/Tuesday morning/afternoon. This Lot is gate-protected.
- Busses will need to park in Lot C on Monday/Tuesday.
- **ALL STUDENTS/DIRECTORS SHOULD USE THE REAR ENTRANCE OF THE CHURCH NEAREST LOT D.**

**Parents/Guests (for Tuesday evening only):**

- All four FBC lots will be open.
- Parents/Guests should enter the main/front entrance of FBC, on the corner of Broadway and W 7<sup>th</sup> Ave.
- **Lot A and B** have the shortest distance to the front entrance.

## Rehearsal/Performance Schedule

### Monday, November 17

5:30pm	Registration Opens (look for signs)		
6:00pm	Student Meeting in Sanctuary ( <i>note – new starting time</i> )		
6:15pm	Roll Call in Rehearsal #1 Locations		
6:30-9:00pm	Rehearsal #1		
	SATB		Sanctuary (learn how to stand/enter stage)
	SSAA		Youth Hall
	T'TBB		Choir Room

### Tuesday, November 18

8:45am	Roll Call in Rehearsal #2 Locations		
9:00am-12:00pm	Rehearsal #2		
	SATB		Youth Hall
	SSAA		Sanctuary (learn how stand/enter stage)
	T'TBB		Choir Room
9:45-10:30am	Director's Meeting		Location TBD
1:15pm	Roll Call in Rehearsal #3 Locations		
1:30-4:30pm	Rehearsal #3		
	SATB	1:30-2:15	Sanctuary
		2:30-4:30	Youth Hall
	SSAA	1:30-3:30	Choir Room
		3:45-4:30	Sanctuary
	T'TBB	1:30-2:15	Youth Hall
		2:30-3:30	Sanctuary (stand/enter)
		3:45-4:30	Choir Room
6:00pm	Call Time (might be adjusted by clinicians)		
	SSAA	6:00pm	Fellowship Hall
	T'TBB	6:00pm	Choir Room
	SATB	6:00pm	Youth Hall
6:30pm	Mid-State SSAA Choir*		
7:15pm	Mid-State T'TBB Choir*		
8:00pm	Mid-State Mixed Choir*		

\* At the time this document is written, we are unsure if students will be able to see all of the other concerts. Much of this depends on the clinicians' needs for rehearsal time immediately before their ensembles' concerts. We will make that call during lunch on Tuesday and inform students during the final rehearsal. All efforts will be made to allow all students to see/hear all three concerts.

## Director Assignments

**Note – All Directors are required to be Present the Entire Event – Both Days.**

Monitors – keep order in the room. Monitor student behavior/cell phone/gum/etc.

Ambassadors – Introduce yourself to clinician before rehearsal begins. Sit in plain view of conductor. Be available if conductor needs anything (water, etc).

Security – stand at assigned door – let in MTVA personnel only.

Pickup – clean up assigned areas after final concert. Likely a 10-minute job.

**SATB Ensemble Chair – Grant Farmer**

**SSAA Ensemble Chair – Katie Baker**

**TTBB Ensemble Chair – Matthew Clark**

### Monday, November 17

5:00-6:30	Registration	Brenda Williams Cindy Fehrman Brenda Jewell Shawn Frazier
	Rear Door Security	John Hylton
6:30-9:00	Youth Hall Monitor	David Collins Matthew Johnson Stella McKnight
	Choir Room Monitor	Embrey Brannon Cindy Freeman Angela Hahn
	Sanctuary Monitor	Lydia Schoonover Shelley Harris Nancy Turner
	Rear Door Security	Greg Gunther
	SATB Ambassador SSAA Ambassador TTBB Ambassador	Sandy Elliott Natalie Pratt David Winton

### Tuesday, November 18

8:30am – 12:00	Youth Hall Monitor	Mary Lee Atenham Angela Beale Elise Dumser
----------------	--------------------	--

	Choir Room Monitor	Anna Caldwell Jennifer Ledbetter Lauren Ramey
	Sanctuary Monitor	Kristina Waugh Stephanie Nolan Blake Saldana
	Rear Door Security	Robert King
	SATB Ambassador SSAA Ambassador TTBB Ambassador	Michael O'Neill Cameron Frazier Jeff Myrick
<b>12:00-1:00</b>	<b>Rear Door Security</b>	<b>NEED VOLUNTEER</b>
1:00-4:30pm	Youth Hall Monitor	Georgette Seay Brittany Sluder Melissa Hinds
	Choir Room Monitor	Jenna Elsberry Dawn Crunk Renee Chapman
	Sanctuary Monitor	Elizabeth Evans Julie Cox Lisa Zimdars
	Rear Door Security	Joseph Warrenn
	SATB Ambassador SSAA Ambassador TTBB Ambassador	Brenda Gregory Gerald Patton Kimberly McLemore
<b>4:30-6:00pm</b>	<b>Rear/Front Door Security</b>	<b>NEED VOLUNTEERS</b>
6:00-8:30pm	Rear Door Security Front Door Security	Scott Corley Adam Womack
After Final Concert	Pickup Dressing Rooms	Missy Cook (girls) TJ McLaughlin (boys)
	Pickup Youth Hall	Judy Yeaworth
	Pickup Choir Room	Matt Smyth

## Literature

### Mid-State SSAA Choir

Clinician – Dr. Timothy Banks, Professor Emeritus, Samford University

<i>Dicunt Infantes</i>	J. Handl
<i>Bonny Young Irish Boy</i>	arr. T. Banks
<i>Salut Printemps</i>	C. Debussy
<i>Alleluia</i>	C. Callahan
<i>Banjo Pickin' Girl</i>	arr. T. Sharp and A. Ramsey

### Mid-State TTBB Choir

Clinician – Ken Berg, Birmingham Boys Choir

<i>The Turtle Dove</i>	arr. Berg
<i>Cripple Creek</i>	arr. Berg
<i>Du bist die Ruh</i>	F. Schubert/arr. P. Eklund
<i>When She Loved Me</i>	arr. Berg
<i>Nothin' Like a Dame</i>	R & H, arr. W. Stickle

### Mid-State SATB Choir

Clinician – Dr. Hugh Floyd, Furman University

<i>I Was Glad When They Said Unto Me</i>	C. H. H. Parry
<i>Bogoroditse Devo</i>	S. Rachmoninoff
<i>On My Journey Home</i>	J. Duoma
<i>Sea Fever</i>	D. Brunner
<i>I've Just Come From the Fountain</i>	A. Thomas

## Rules/Attire

- Each student must bring a pencil.
- No gum, food, or drink in rehearsal. Bottled water is allowed and encouraged.
- No illegal photocopies of music allowed. **Please bring your music in a black folder.**
- Tardiness will not be tolerated. Be on time for roll call so the rehearsal can begin early.
- Participation in Mid-State is required for All-State.
- Absences/tardiness puts one's Mid-State and All-State status in jeopardy.
- Dress code for rehearsals – follow your school's dress code. Comfortable shoes/clothes are encouraged.
- Dress code for concerts
  - Women: ankle length black dress with sleeves, or an ankle length black skirt with a black top of similar or complementary fabric, black shoes no more than 2 inches in height, optional modest jewelry such as a single strand of pearls or a drop-pearl or single stone on a delicate chain. No long dangling earrings or heavy choke necklaces.
  - Men: White tux shirt or white long-sleeve dress shirt with black bow tie, black tux pants or black dress slacks, black dress shoes and black socks. No jackets, and no tennis shoes. (Black cummerbunds optional)

## Notes for Directors

- A boys' and girls' **dressing area** will be available on Tuesday afternoon from 4:30-6:00.
- There are plenty of downtown eating establishments. You can also bring a sack lunch/order pizza at the church. However, please bring large trash bags and clean up after your group!!!
- Each student must bring a printed copy of one of the audition pieces with you (SSAA Choir – Handl, TTBB Choir – Farmer, SATB Choir – Parry)
- Students in the SSAA Choir must print a copy of the Debussy *Salut Printemps* from the email sent to Directors on Oct. 3. The piece is currently on backorder – an original will be issued to students at the event on November 17. MTVA has arranged permission from the publisher for these temporary photocopies.
- Students in the SATB Choir must print a copy of the Rachmoninov from the email sent to directors on Oct. 3. A copy is also on the MTVA website. This piece is in the public domain.
- Students in the TTBB Choir must print a copy of the “When She Loved Me” from a forthcoming email to directors. MTVA is arranging permission for this printing.
- Students in the TTBB Choir should listen to the pronunciation guide for the Schubert on the MTVA website.
- Students in the SATB Choir should listen to the pronunciation guide for the Rachmaninoff on the MTVA website.
- Students in the SSAA Choir should listen to the pronunciation guide for the Debussy on the MTVA website. There also exists a performance example provided by the clinician.
- All solo auditions will be conducted by the clinician at the event. **Students in the SSAA choir are strongly encouraged to look at the long solo in the middle of the Debussy!**

## DIVISI/PART LEARNING

- Follow regular divisi when in 2, 4, or 8 parts.
- When genders are divided into three parts (SSA, TTB), divide accordingly:
  - Soprano 1/Tenor 1 Sing the highest parts
  - Soprano 2/Tenor 2 Last name A-D Sing the higher parts  
Last name E-Z Sing the middle parts
  - Alto 1/Bass 1 Last name A-D Sing the lower parts  
Last name E-Z Sing the middle parts
  - Alto 2/Bass 2 Sing the lowest parts
- There are no part-learning files this year provided by MTVA. If you have made some for your students and would like to share with MTVA, email them to Brian Russell at [russellb@rcschools.net](mailto:russellb@rcschools.net).